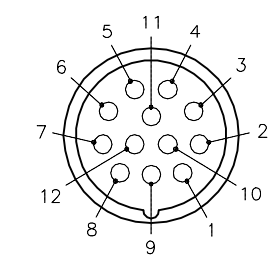
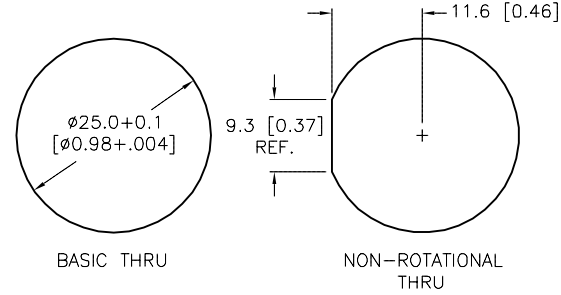

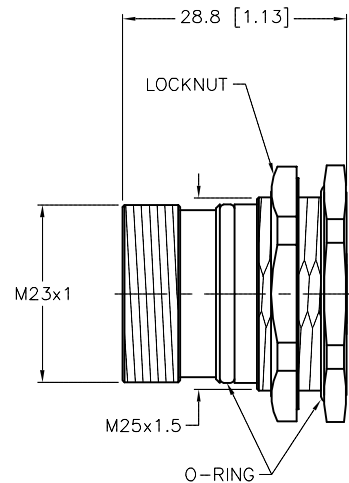
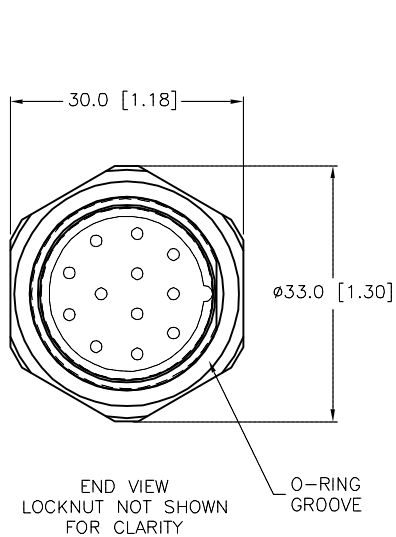


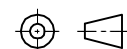
FEMALE END VIEW	PANEL CUTOUT (TYPICAL)	SPECIFICATIONS	
	 <p>BASIC THRU</p> <p>NON-ROTATIONAL THRU</p>	CONTACT CARRIER MATERIAL/COLOR	NYLON OR TPU
		CONTACT MATERIAL/PLATING	BRASS/GOLD
		HOUSING/LOCKNUT MATERIAL/PLATING	BRASS/NICKEL
		SEALING RING	BUNA N OR FLUOR RUBBER
		RATED CURRENT [A]	8.0 A
		RATED VOLTAGE [V]	300 V
		TERMINATION METHOD	SOLDER LUG
		MAXIMUM CONDUCTOR SIZE [AWG]	17 AWG
		TEMPERATURE RANGE	-40°C to +105°C (-40°F to +221°F)
		PROTECTION CLASS	MEETS IP65
		MAXIMUM WALL THICKNESS	MAXIMUM IS 6.5 [0.25]
 M23 connector			



NOTE
PRELIMINARY
SPECIFICATIONS

SOURCE DRAWING - FOR REFERENCE ONLY

NOTE:
1. CONTACT HOLDER ASSEMBLED AND UV CURED INTO HOUSING.

NOTE:					<div>RELATED DOCUMENTS</div> <div>1. 2. 3. 4.</div>	<div>3RD ANGLE PROJECTION</div> <div></div>	<div>THIS DRAWING IS CONFIDENTIAL AND THE PROPERTY OF TURCK INC. USE OF THIS DOCUMENT WITHOUT WRITTEN PERMISSION IS PROHIBITED.</div>	<div>3000 CAMPUS DRIVE MINNEAPOLIS, MN 55441 1-800-544-7769 (763) 553-7300 (763) 553-0708 fax turck.com</div>						
1. CONTACT HOLDER ASSEMBLED AND UV CURED INTO HOUSING.								<div>MATERIAL</div> <div>SEE SPECIFICATIONS</div>	<div>ALL DIMENSIONS DISPLAYED ON THIS DRAWING ARE FOR REFERENCE ONLY</div>	<div>DRFT</div>	<div>TR</div>	<div>DATE</div> 09/26/11	<div>DESCRIPTION</div> <div>CKFD 12-0</div>	
										<div>APVD</div>	<div>SCALE</div> 1 = 1.0			
										<div>FINISH</div> <div>SEE SPECIFICATIONS</div>	<div>CONTACT TURCK FOR MORE INFORMATION</div>	<div>UNIT OF MEASUREMENT</div> <div>MILLIMETER [INCH]</div>		<div>IDENTIFICATION NO.</div> <div>U4800-2</div>
P2	UPDATE RATED CURRENT SPECIFICATION			KMY	01/30/14	44704	DO NOT SCALE THIS DRAWING		<div>FILE: U4800-2</div>					
REV	DESCRIPTION			BY	DATE	ECO NO.			<div>SHEET 1 OF 1</div>					